

SUN  
DESTINATIONS  
BOUTIQUE AFRICAN  
TRAVEL EXPERIENCES *Collection*

DIRECTIONS  
SHEET



AFRICA  
ON FOOT

AFRICA  
ON FOOT 

## FROM PRETORIA/JOHANNESBURG

We recommend driving via Dullstroom, as the road to Lydenburg is no longer in good condition and can be hazardous. GPS may suggest that route, but it is not recommended. The journey should take about 6 hours.

- From Johannesburg/Pretoria Take the N12 or N4 highway to Witbank / eMalahleni (from Johannesburg Airport, follow signs to Boksburg to find the N12. Drive past eMalahleni and Middleburg (This is actually the main route to Nelspruit and Maputo).
- After Middleburg, take the R33 Belfast turnoff from the N4 (where the Engen One Stop is), turn left on the R33 and follow signs towards Belfast and Dullstroom. Go through the town of Belfast and then turn right on the R540 road towards Dullstroom.
- Dullstroom is the halfway mark between JHB and the camp. It's a scenic place to stop, explore and have lunch. From Dullstroom you will head towards Lydenburg/Mashishing), which is roughly 50 km away.
- Continue on the R540 but look out for potholes. Once you get to Lydenburg (also referred to as Mashishing) junction, turn left onto the R36 and go through the town centre. The R36 is also called Viljoen street. Carry on straight and turn left on Buhrmann Street.
- At the Total Garage, turn right onto De Clerq Street, which is also the R36. Continue straight on the R36 which becomes the R527. This road takes you past the town of Ohrigstad, over the Abel Erasmus pass, and through the Strijdom tunnel. It's about 50 km from Lydenburg to Ohrigstad.
- After the tunnel, continue for another 40/50 km until you reach the town of Hoedspruit. There are 4 stops before you reach the railway bridge. After the railway bridge, you turn right on the R40 to Klaserie/White River.
- Continue along this road until you see the turn off to the left for Eastgate Airport. It's roughly 7km from town to the airport turn off. Turn left here and after 300m you will go through a control gate and then head directly for the Timbavati Game Reserve Gate. 17km later look out for Bush Pub & Inn on your left and Josmacs Bush Pub on your right hand side. In front of you now will be the new Timbavati Gate (Enkhulu Gate).
- **From this point on please do not follow GPS inside the reserve.**
- Enter Timbavati Gate and drive 6.4 km, then turn left onto the dirt road. Continue 3.5 km to a 4-way crossing and turn right, following light green Africa On Foot signs. Drive 2.5 km, then turn left at the sign for Ross, Africa On Foot and nThambo Tree Camp. Follow the dirt road to Africa On Foot Camp.
- Do not exit your vehicle until you reach the lodge. Drive slowly in case of wildlife and maintain distance at all times. Do not drive off-road under any circumstances.

## FROM HAZYVIEW

- From Hazyview follow the R40 towards Klaserie & Hoedspruit and about 6 km before you reach Hoedspruit itself, turn right at the signboard towards Eastgate airport/Thornybush Reserve/Timbavati Reserve (Argyle Road).
- After 300m you will go through a control gate, then head straight for 17 km - past the Eastgate airport and over the Klaserie river - directly to the Enkhulu gate (entrance gate for the Klaserie, Umbabat and Timbavati Private Nature Reserves).
- **From this point on please do not follow GPS inside the reserve.**
- Enter at the Timbavati gate and drive 6.4km. Turn left onto the dirt road and drive straight for a further 3.5 km (10 min).
- You will come to a 4-way crossing, turn right at this crossway following the light green signs for Africa On Foot Camp.
- Drive a further 2.5km until you see a sign for Ross, Africa On Foot and nThambo Tree Camp. Turn left here and drive along the dirt road until you see the sign for Africa On Foot Camp.
- Do not get out of your car until you reach the lodge. You may see some wildlife on your way - if you do, slow down and maintain a good distance. Do not drive off-road in any circumstances.
- In total the driving time once you entered the Enkhulu gate until you reach the lodge is between 30-45 min

## FEES PAYABLE DIRECT AT CAMP

Timbavati Reserve Vehicle Entry Fee: Per vehicle, per entry (check rate sheet). This fee is collected in cash, MasterCard or Visa at the Timbavati Gate on arrival.

**On some signposts/maps, Belfast may be referred to as Emakhazeni.**



### RESERVATIONS

E: [reservations@sundestinations.co.za](mailto:reservations@sundestinations.co.za)

T: + 27 21 203 5173

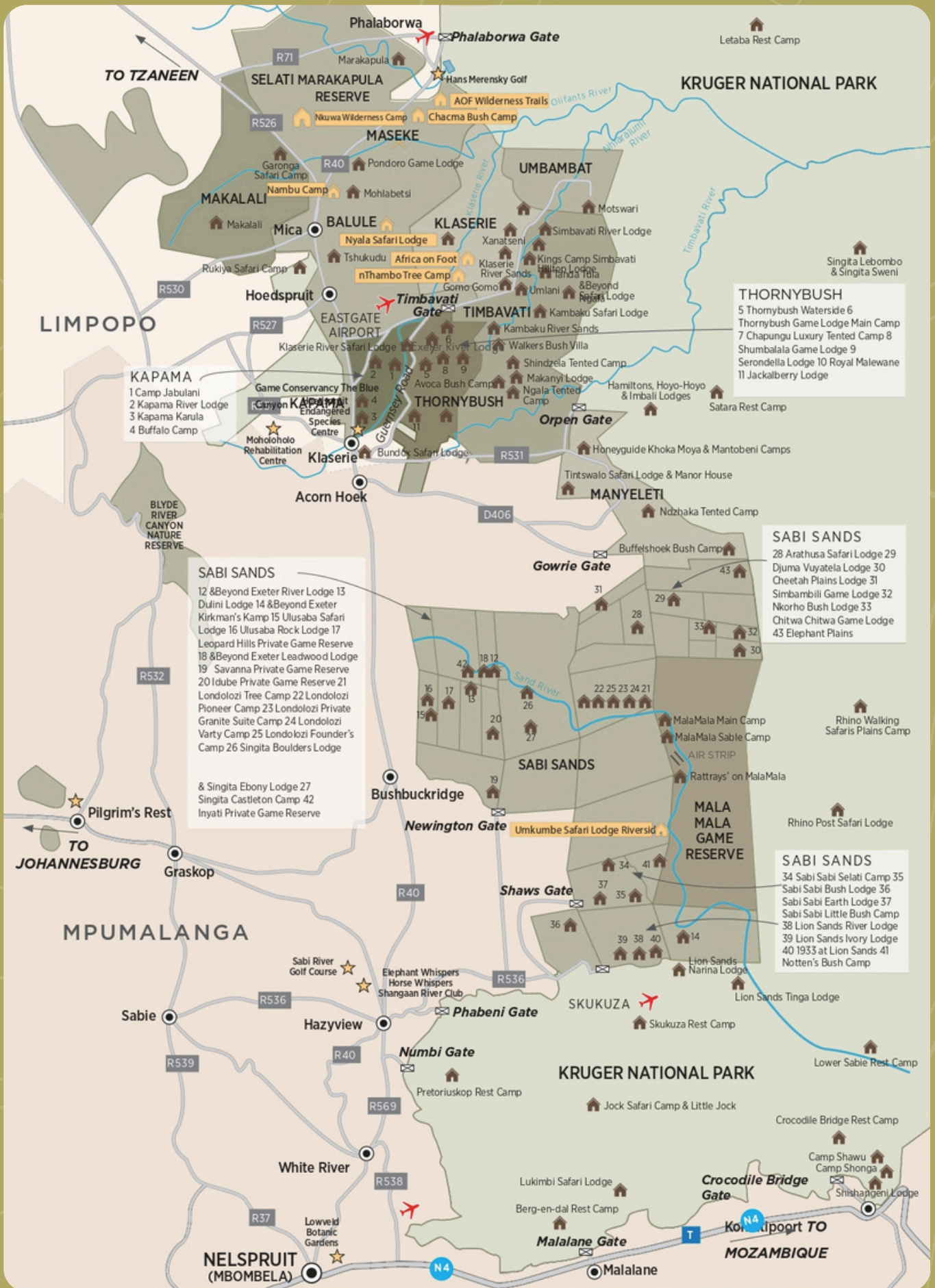
W: [www.sundestinations.co.za](http://www.sundestinations.co.za)

### MARKETING

E: [mallory@sundestinations.co.za](mailto:mallory@sundestinations.co.za)

T: +27 21 203 5173

W: [www.africaonfoot.com](http://www.africaonfoot.com)



**THORNYBUSH**  
 5 Thornybush Waterside 6  
 7 Thornybush Game Lodge Main Camp  
 7 Chapungu Luxury Tented Camp 8  
 8 Shumbalala Game Lodge 9  
 9 Serondella Lodge 10 Royal Malewane  
 11 Jackalberry Lodge

**KAPAMA**  
 1 Camp Jabulani  
 2 Kapama River Lodge  
 3 Kapama Karula  
 4 Buffalo Camp

**SABI SANDS**  
 12 & Beyond Exeter River Lodge 13  
 13 Dufini Lodge 14 & Beyond Exeter  
 14 Kirkman's Kamp 15 Ulusaba Safari  
 15 Lodge 16 Ulusaba Rock Lodge 17  
 17 Leopard Hills Private Game Reserve  
 18 & Beyond Exeter Leadwood Lodge  
 19 Savanna Private Game Reserve  
 20 Idube Private Game Reserve 21  
 21 Londolozzi Tree Camp 22 Londolozzi  
 22 Pioneer Camp 23 Londolozzi Private  
 23 Granite Suite Camp 24 Londolozzi  
 24 Varty Camp 25 Londolozzi Founder's  
 25 Camp 26 Singita Boulders Lodge  
 & Singita Ebony Lodge 27  
 Singita Castleton Camp 42  
 Inyati Private Game Reserve

**SABI SANDS**  
 28 Arathusa Safari Lodge 29  
 29 Djuma Vuyatela Lodge 30  
 30 Cheetah Plains Lodge 31  
 31 Simbambili Game Lodge 32  
 32 Nkorho Bush Lodge 33  
 33 Chitwa Chitwa Game Lodge  
 43 Elephant Plains

**SABI SANDS**  
 34 Sabi Sabi Selati Camp 35  
 35 Sabi Sabi Bush Lodge 36  
 36 Sabi Sabi Earth Lodge 37  
 37 Sabi Sabi Little Bush Camp  
 38 Lion Sands River Lodge  
 38 39 Lion Sands Ivory Lodge  
 40 1933 at Lion Sands 41  
 41 Notten's Bush Camp