



# UMKUMBE SAFARI LODGE RIVERSIDE

## FROM PRETORIA/JOHANNESBURG

- The distance to Umkumbe Safari Lodge by road from Johannesburg is approx 5 hours. The scenic route descends from the Highveld to the Lowveld with spectacular views of the Drakensberg Mountains in the distance.
- Take the N12 or N4 highway respectively to Witbank /eMalahleni (from Johannesburg Airport, follow signs to Boksburg to find the N12). Follow the N4 highway past Middleburg (Toll Plaza), Belfast/ eMakhazeni and Machadodorp (Toll Plaza).
- Follow the Schoemanskloof option on the N4 towards Nelspruit /Mbombela. At Nelspruit/Mbombela, turn left onto the R40 to White River.
- In White River, at the first set of traffic lights in the town itself, turn left, following signs to Hazyview and Wildtuin/ Kruger National Park. At the next set of traffic lights, turn right. Cross over the next set of traffic lights and then at the final set, with a Caltex garage on your right, turn left on the R40 for Hazyview (the R538, via the Numbi Gate, is a busy road and not recommended).
- After approximately 45km, you will go down a steep hill towards a T-junction. Turn left, staying on the R40 and drive towards Hazyview and follow as per the below.

## FROM HAZYVIEW

- Proceed through Hazyview until you reach a set of traffic lights.
- Turn here onto the Paul Kruger Road which will be signposted Kruger Gate and the R536. Continue along this road for approximately 34.5km and on the left-hand side of the road, you will see lodge signboards for various lodges including Inyati, Idube, Exeter and Savanna. Go past these, and approximately 3km further on, on the lefthand side of the road, you will see signposts for the private game reserves of MalaMala, Sabi Sabi, Londolozi, Umkumbe etc.
- Turn left here onto the gravel road. Travel for approximately 8.5km and you will get to the Sabie Game Reserve – this is the reserve that you need to enter to reach Umkumbe Safari Lodge Riverside.
- Once inside the gate, follow the signs to the lodge through the reserve. Allow between 30-50 minutes to drive from the gate to the lodge.
- Do not get out of your car until you reach the lodge. You may see some wildlife on your way – if you do, slow down and maintain a good distance. Do not drive off road in any circumstances.

## FROM KRUGER MPUMALANGA INTERNATIONAL AIRPORT

- Turn right out of the airport onto the R538 and follow the signs to White River (Witriver). Continue for approximately 12km, until you reach the first set of traffic lights in White River, with the mosque on your left.
- Turn right and travel towards Hazyview on the R40. After approximately 45km, you will go down a steep hill towards a T-junction.
- Turn left, staying on the R40 and follow the directions listed below from Hazyview.

## FROM SKUKUZA/ PAUL KRUGER GATE

- Exit the Kruger National Park at the Paul Kruger Gate and drive towards Hazyview on the R536.
- Approximately 5km later, on your right hand side, you will see signposts for the private game reserves of MalaMala, Sabi Sabi, Londolozi, Umkumbe etc.
- Turn right here onto the gravel road. Travel for approximately 8.5 km and you will get to the Sabie Game Reserve – this is the reserve that you need to enter to reach Umkumbe Safari Lodge Riverside. Once inside the gate, follow the signs to the lodge through the reserve. Allow between 30-50 minutes to drive from the gate to the lodge.
- Do not get out of your car until you reach the lodge. You may see some wildlife on your way – if you do, slow down and maintain a good distance. Do not drive off-road in any circumstances. Do not drive off road in any circumstances.

**\*NB. PLEASE DO NOT FOLLOW GPS DIRECTIONS!  
FOLLOW THE SIGNS THAT SAY UMKUMBE  
SAFARI LODGE RIVERSIDE. YOU MUST TAKE THE  
RIVERSIDE TURNOFF**

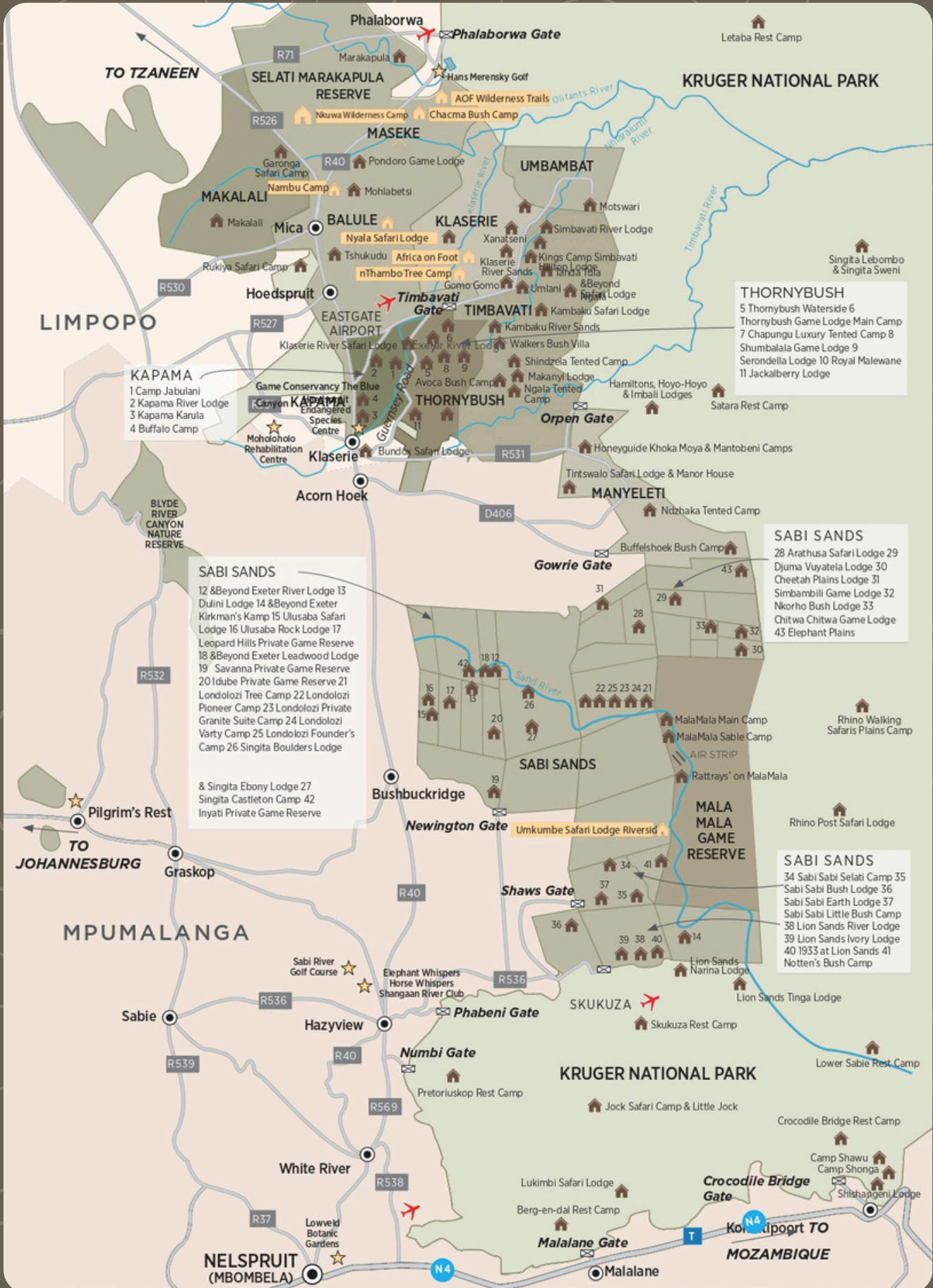


### RESERVATIONS

E: [reservations@sundestinations.co.za](mailto:reservations@sundestinations.co.za)  
T: + 27 21 203 5173  
W: [www.sundestinations.co.za](http://www.sundestinations.co.za)

### MARKETING

E: [mallory@sundestinations.co.za](mailto:mallory@sundestinations.co.za)  
T: +27 21 203 5173  
W: [sundestinations.co.za/camp/umkumbe-safari-lodge-riverside/](http://sundestinations.co.za/camp/umkumbe-safari-lodge-riverside/)



**THORNYBUSH**  
 5 Thornybush Waterside 6  
 7 Thornybush Game Lodge Main Camp  
 8 Chapungu Luxury Tented Camp  
 9 Shumbalala Game Lodge  
 10 Serondella Lodge  
 11 Royal Malewane  
 11 Jackalberry Lodge

**SABI SANDS**  
 12 &Beyond Exeter River Lodge  
 13 Dulini Lodge  
 14 &Beyond Exeter Kirkman's Kamp  
 15 Ulusaba Safari Lodge  
 16 Ulusaba Rock Lodge  
 17 Leopard Hills Private Game Reserve  
 18 &Beyond Exeter Leadwood Lodge  
 19 Savanna Private Game Reserve  
 20 Idube Private Game Reserve  
 21 Londolozzi Tree Camp  
 22 Londolozzi Pioneer Camp  
 23 Londolozzi Private Granite Suite Camp  
 24 Londolozzi Varty Camp  
 25 Londolozzi Founder's Camp  
 26 Singita Boulders Lodge  
 & Singita Ebony Lodge  
 27 Singita Castleton Camp  
 42 Inyati Private Game Reserve

**SABI SANDS**  
 28 Arathusa Safari Lodge  
 29 Djuma Vuyatela Lodge  
 30 Cheetah Plains Lodge  
 31 Simbambili Game Lodge  
 32 Nkorho Bush Lodge  
 33 Chitwa Chitwa Game Lodge  
 43 Elephant Plains

**SABI SANDS**  
 34 Sabi Sabi Selati Camp  
 35 Sabi Sabi Bush Lodge  
 36 Sabi Sabi Earth Lodge  
 37 Sabi Sabi Little Bush Camp  
 38 Lion Sands River Lodge  
 39 Lion Sands Ivory Lodge  
 40 1933 at Lion Sands  
 41 Notten's Bush Camp